

THIS DRAWING IS AN UNCONTROLLED COPY UNLESS STAMPED OTHERWISE

CONTRACTORS SHALL VERIFY JOB DIMENSIONS BEFORE ANY JOB COMMENCES. ALL SHOP DRAWINGS SHALL BE SUBMITTED TO THE SUPERINTENDENT AND MANUFACTURER SHALL NOT COMMENCE FROM THE RETURN OF DRAWINGS BEING BY THE CONSULTANT. FOUR-DIMENSIONAL SHALL TAKE PRECEDENCE OVER SCALE. THIS DRAWING SHALL BE USED IN CONNECTION WITH ALL RELEVANT CONTRACT SPECIFICATIONS AND DRAWINGS COPYRIGHT OF THIS DRAWING IS VESTED IN WARDLE.

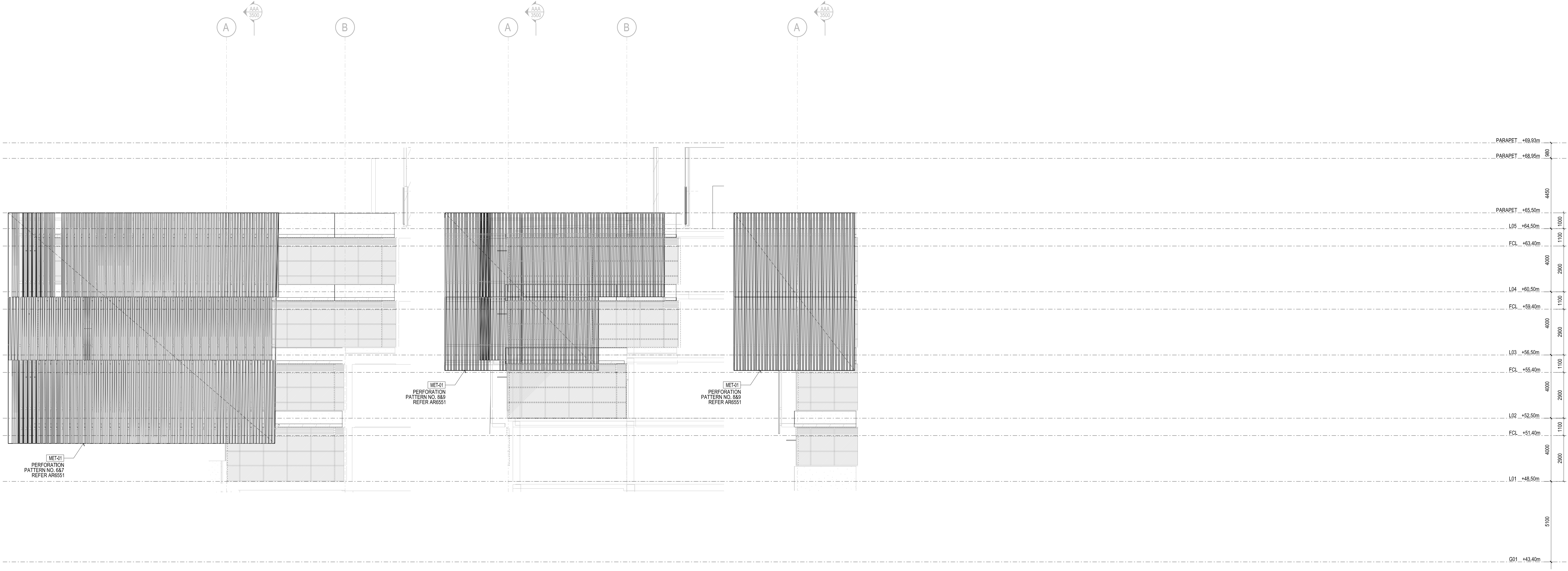
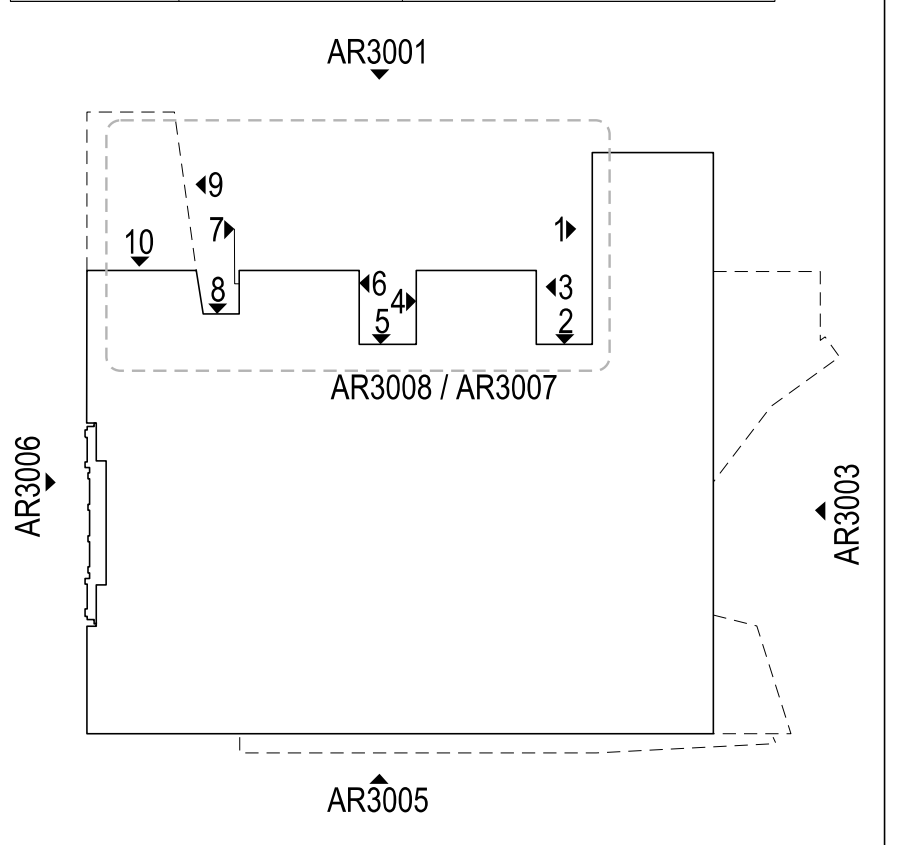
General Notes

KEY REFERENCE ARCHITECTURAL DRAWING SERIES:
 FACADE SETOUT AR1502 - AR1507
 PRECAST SETOUT AR1512 - AR1517
 SCREEN SETOUT AR1522 - AR1527
 SCREEN DETAILS AR5500 - AR5554
 PRECAST DETAILS AR5300 - AR5304

LEGEND:
 [FSX] FACADE TYPE. REFER FACADE SCHEDULE
 [WIM] AWNING WINDOW MANUAL
 [AWA] AWNING WINDOW AUTOMATIC
 [AV] ACTIVE LOUVRE - NATURAL VENTILATION WITH DAMPER
 [AM] ACTIVE LOUVRE - MECHANICAL
 [NL] NON-ACTIVE LOUVRE
 [FP] FIXED PANEL
 [SP] SPANDREL PANEL
 [FJ] FALSE JOINT - RER. TO PRECAST DETAILS
 [VB] VISIBLE BACKPAN
 [MJ] MOVEMENT JOINT
 [LS] LIGHT SHELF

FACADE NOTES SPECIFIC:
 FC.01 PROVIDE NOTCH IN PRECAST FOR STEEL OUTRIGGER/STUB BEAM REF. TO AR5303 & AR5303
 FC.02 -
 FC.03 -

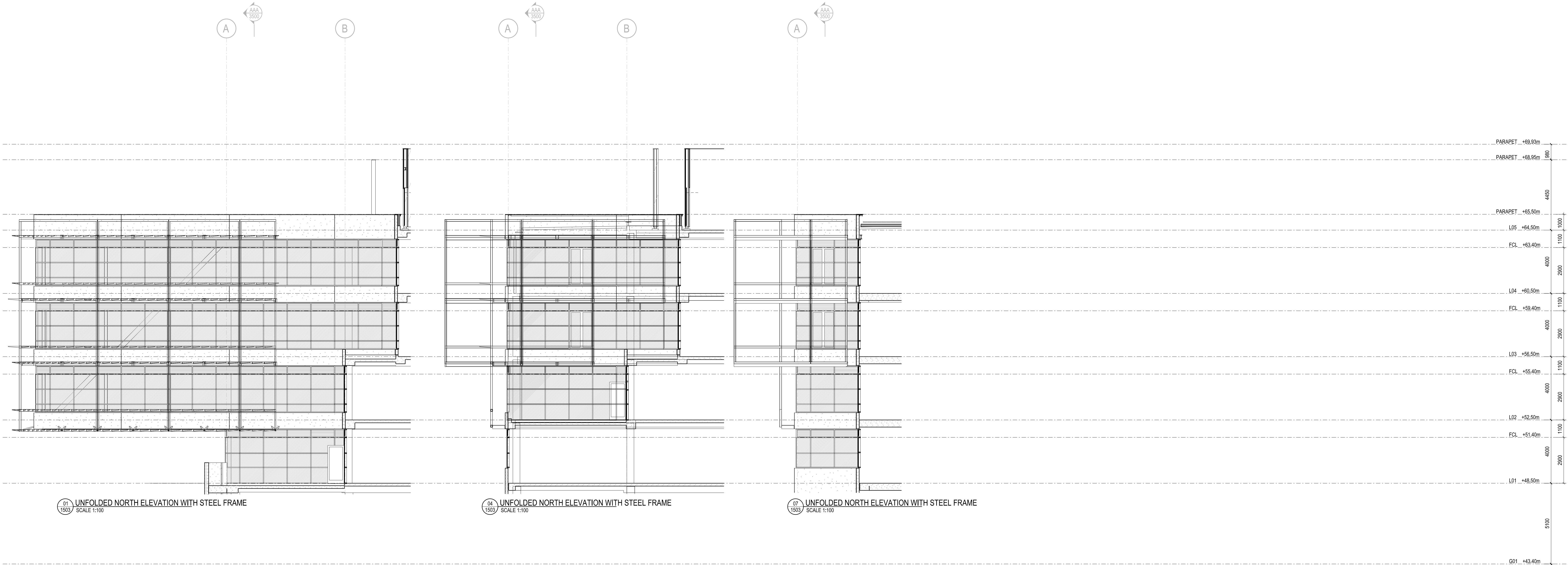
FACADE/PRECAST CODE	FRONT FINISH	REAR FINISH
PR-01	HONED	---
PR-02	OFF-FORM	---
PR-03	HONED	ACID WASH
PR-04	OFF-FORM	ACID WASH
PR-10	HONED	HONED



01 UNFOLDED NORTH ELEVATION WITH SCREEN
SCALE 1:100

04 UNFOLDED NORTH ELEVATION WITH SCREEN
SCALE 1:100

07 UNFOLDED NORTH ELEVATION WITH SCREEN
SCALE 1:100



01 UNFOLDED NORTH ELEVATION WITH STEEL FRAME
SCALE 1:100

04 UNFOLDED NORTH ELEVATION WITH STEEL FRAME
SCALE 1:100

07 UNFOLDED NORTH ELEVATION WITH STEEL FRAME
SCALE 1:100

Rev	Issue	Revision Description	Amd	Date
A	SG	ISSUED FOR CONSTRUCTION		10.01.14
11	SG	VALUE MANAGEMENT ISSUE		28.03.13
10	SG	100% CD - TENDER ISSUE		07.09.12
09	SG	90% CD ISSUE		10.08.12
08	SG	75% CD ISSUE		13.07.12
07	SG	50% CD ISSUE		08.06.12
06	SG	25% CD ISSUE		20.04.12
05	JC	FINAL DD ISSUE		24.02.12
04	JC	DESIGN DEVELOPMENT ISSUE		20.01.12
03	JC	DESIGN DEVELOPMENT ISSUE		22.12.11
02	JC	PRELIMINARY DD		02.11.11
01	JC	PRELIMINARY DD		07.10.11



NADAAA
 NADAAA
 1920 Washington Street No.2 Boston Massachusetts 02118 USA
 Telephone +1 617 442 8232 Facsimile +1 688 442 1417 Email nadaaa@nadaaa.com

John Wardle Architects
 25 Rokeby Street, Collingwood, Victoria 3066 Australia
 Tel: +61 3 8662 0400 www.johnwardlearchitects.com
 © 2012 John Wardle Architects ABN 83 006 814 268

Client **University of Melbourne Parkville Campus**

Project **Faculty of Architecture Building and Planning**

Title **ELEVATIONS UNFOLDED NORTH ELEVATION WITH SCREEN**

Project No.	0913	Scale	1:100 @ A0 1:200 @ A2
Drawing No.	AR3009	Revision	A
Date	May 2011	Dwn	-
Co-Ord	-	Chk	-

FILENAME - \$FILES
FOR CONSTRUCTION